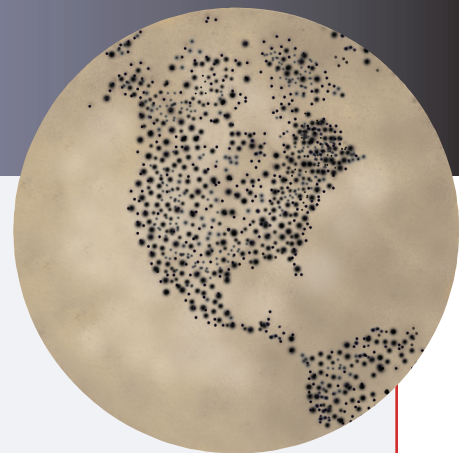


# The T-SPOT®.TB Test Bulletin

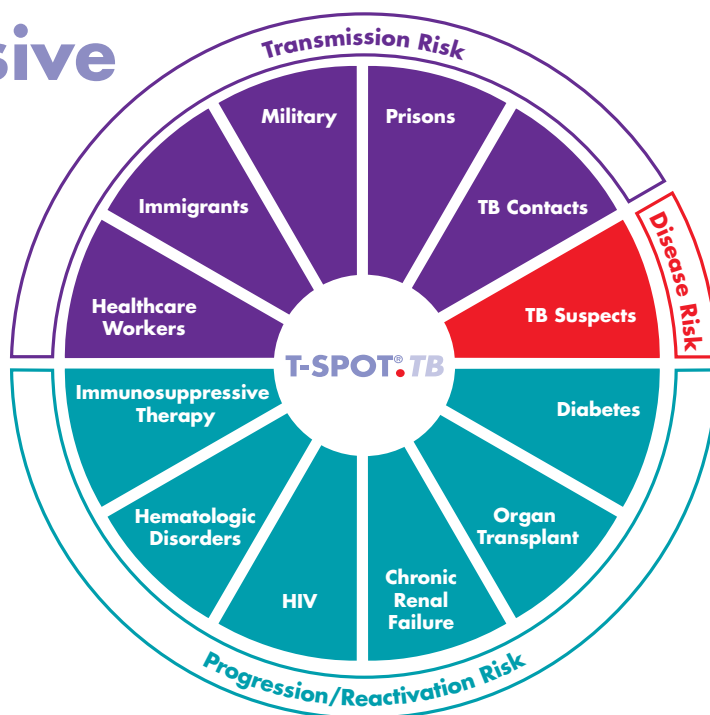


The T-SPOT.TB test offers several advantages over other screening tests for TB:

- Sensitivity of **95.6%\***
- Specificity of **97.1%\***
- Results are not affected by the BCG vaccine and most common non-tuberculosis mycobacteria\*
- Can be used for all high-risk groups
- Reliable in the immunosuppressed\*
- Cost-effective
- "One and Done": Single blood test and no need for a return visit
- Utilizes standard blood collection tubes
- No special phlebotomy training required

\*T-SPOT.TB Package Insert

## Comprehensive TB Testing Coverage



Stop TB. Start with the **T-SPOT®.TB** Test

# The T-SPOT<sup>®</sup>.TB Test Bulletin

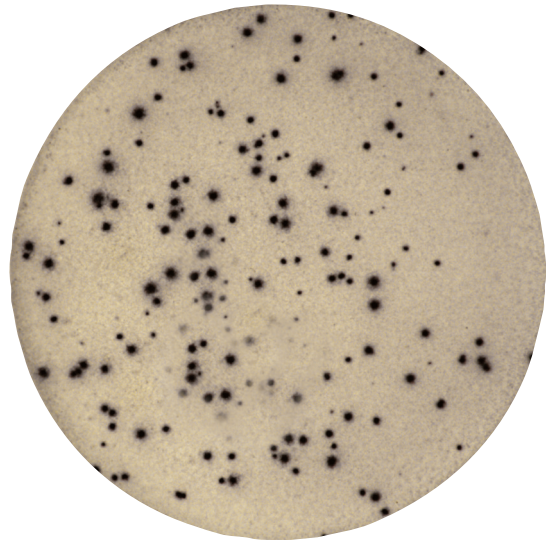
The T-SPOT.TB test detects the immune response of T cells that have been stimulated by *M. tuberculosis* antigens. The test utilizes *M. tuberculosis*-specific antigens that are absent from BCG strains and most non-tuberculosis mycobacteria. The T-SPOT.TB test is an indirect test for *M. tuberculosis* infection (including disease) and is intended for use in conjunction with risk assessment, radiography and other medical and diagnostic evaluations.

## For More Information:

- Visit our website at **www.TSPOT.com**
- Call us toll-free at **1-877-20 TSPOT**
- Or Email us at **Info@TSPOT.com**

## A Positive Test Result

Interferon gamma is captured and presented as “spots” from T cells sensitized to TB. T-SPOT.TB test results are reported as positive, negative, borderline and invalid. It is recommended that borderline and invalid results be retested with a new specimen.



**NOTE:** Diagnosing or excluding tuberculosis disease, and assessing the probability of LTBI, requires a combination of epidemiological, historical, medical and diagnostic findings that should be taken into account when interpreting the T-SPOT.TB test. Refer to the most recent CDC guidance (<http://www.cdc.gov/nchstp/tb>) for detailed recommendations about diagnosing TB infection (including disease) and selecting persons for testing.

# Stop TB. Start with the T-SPOT<sup>®</sup>.TB Test